

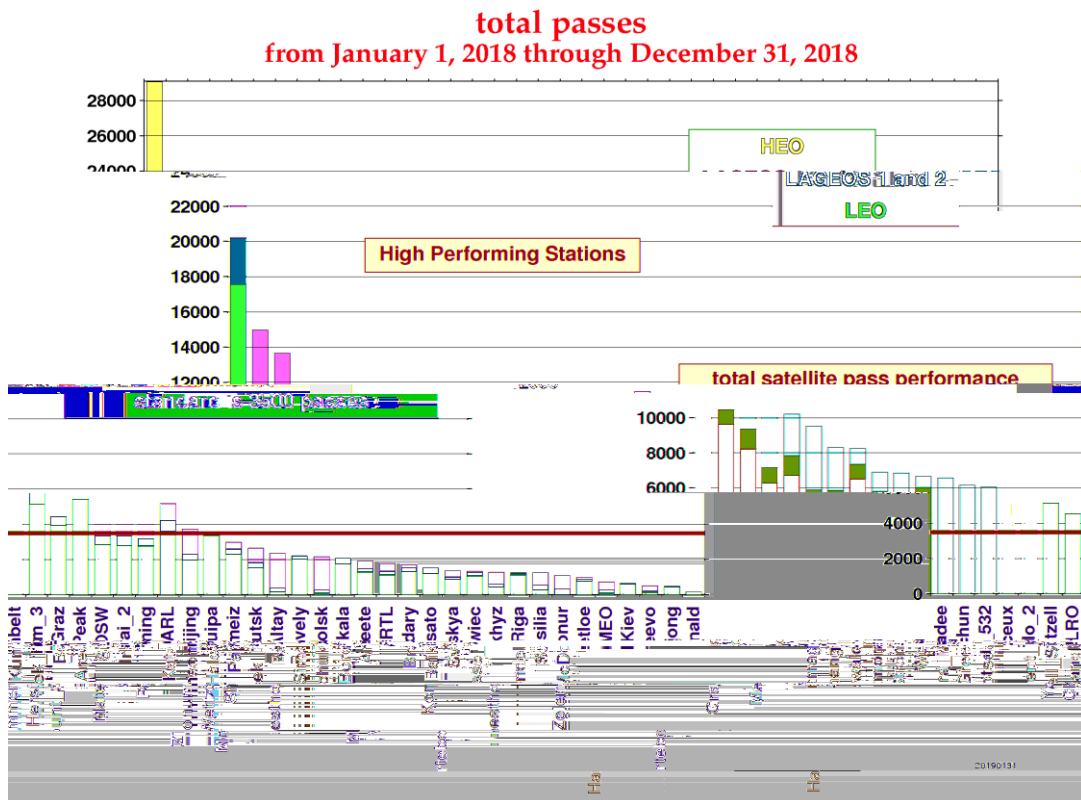
2018

2018

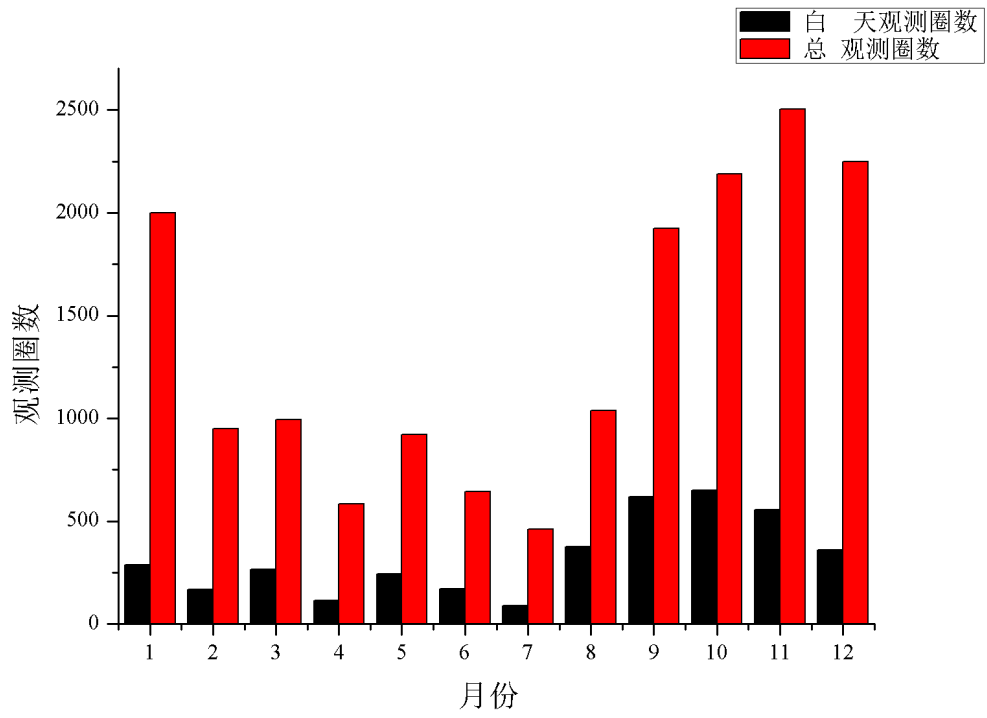
SLR

1.1 2018 SLR

2018



1.1.1



1.1.2 2018 SLR

1.2

2018	113		
37	LAGEOS-1	LAGEOS-2	74
	GPS		
GLONASS	QZSS	IRNSS	
2018	ILRS Space Debris Study Group		TOPEX OICETS

1.2.1 2018 SLR

--	--	--

1	ENVISAT	217
2	HY-2A	327
3	HY-2B	117
4	OICETS	24
5	TOPEX	503
6	Tiangong1	31
7	Tiangong2	150
8	1	111
9	2	40

1.3

1.3.1 2018

COMPASS-G1	118
COMPASS-I1	1
COMPASS-I3	69
COMPASS-I5	71
COMPASS-M3	43
COMPASS-I6B	65
COMPASS-MS2	1
HY-2A	327
HY-2B	117
X1	111
X2	40
Tiangong1	31
Tiangong2	150

1.4 2018

ILRS 16

Galileo-215 Galileo-216 Galileo-217 Galileo-218 Galileo-219

Galileo-220

Glonass137 Glonass138

B

PAZ

S-NET

1.4.1 2018

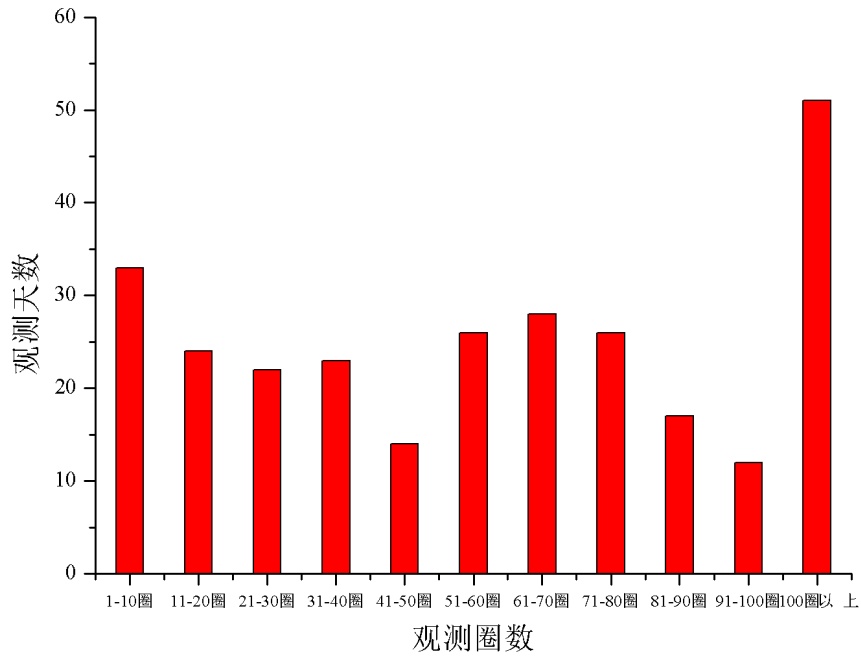
	km	pass
Galileo-215	23220km	73
Galileo-216		58
Galileo-217		60
Galileo-218		67
Galileo-219		21
Galileo-220		25
Gracefo1	500km	228
Gracefo2		217
Glonass137	19140km	117
Glonass138		34
HY-2B	971km	117
PAZ	514km	153
SNET-1	600km	90
SNET-2		87
SNET-3		24
SNET-4		92

1.5 SLR

1

SLR

81 -90	17
91 -100	12
100	51
	276

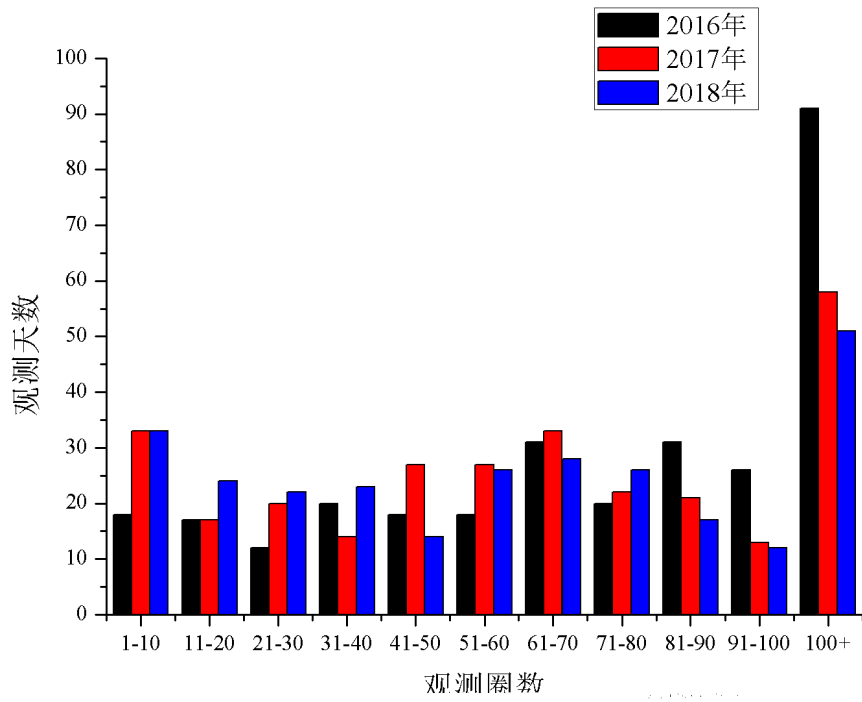


1.5.1 2018

1.5.3.

	2016	2017	2018
1 -10	18	33	33
11 -20	17	17	24
21 -30	12	20	22
31 -40	20	14	23
41 -50	18	27	14
51 -60	18	27	26
61 -70	31	33	28
71 -80	20	22	26

81 -90	31	21	17
91 -100	26	13	12
100	91	58	51
	302	285	276



1.5.2

2

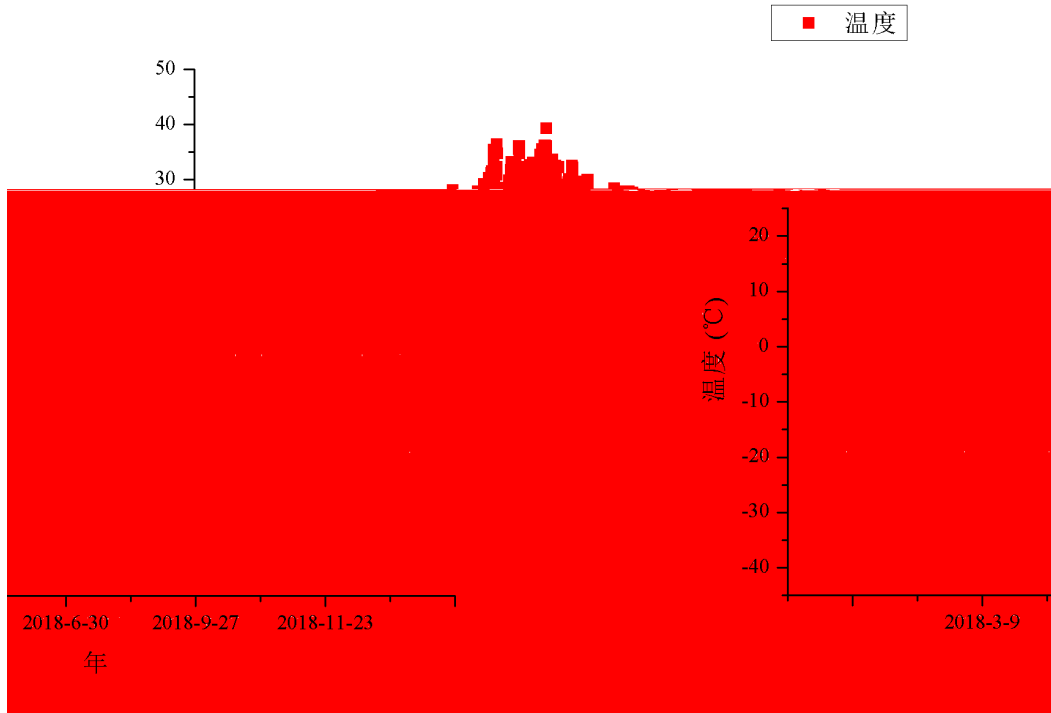
43.7905

274.2

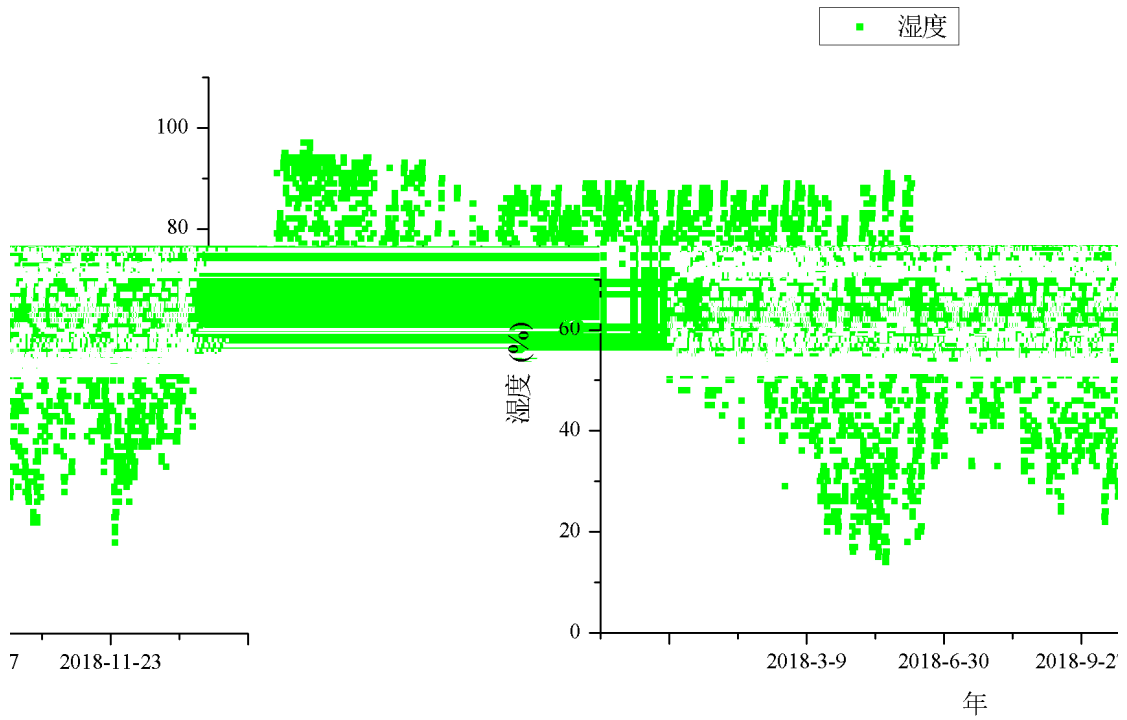
0

-35

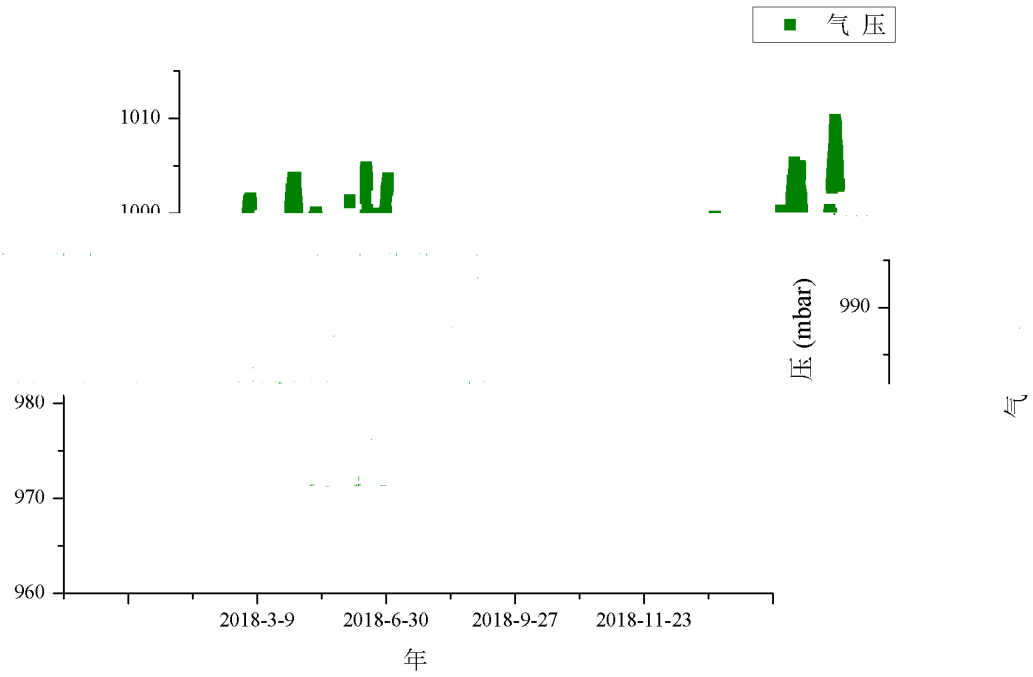
38



1.5.3 2018



1.5.42018



1.5.5 2018

1.6

1 2018 SLR

KHz SLR

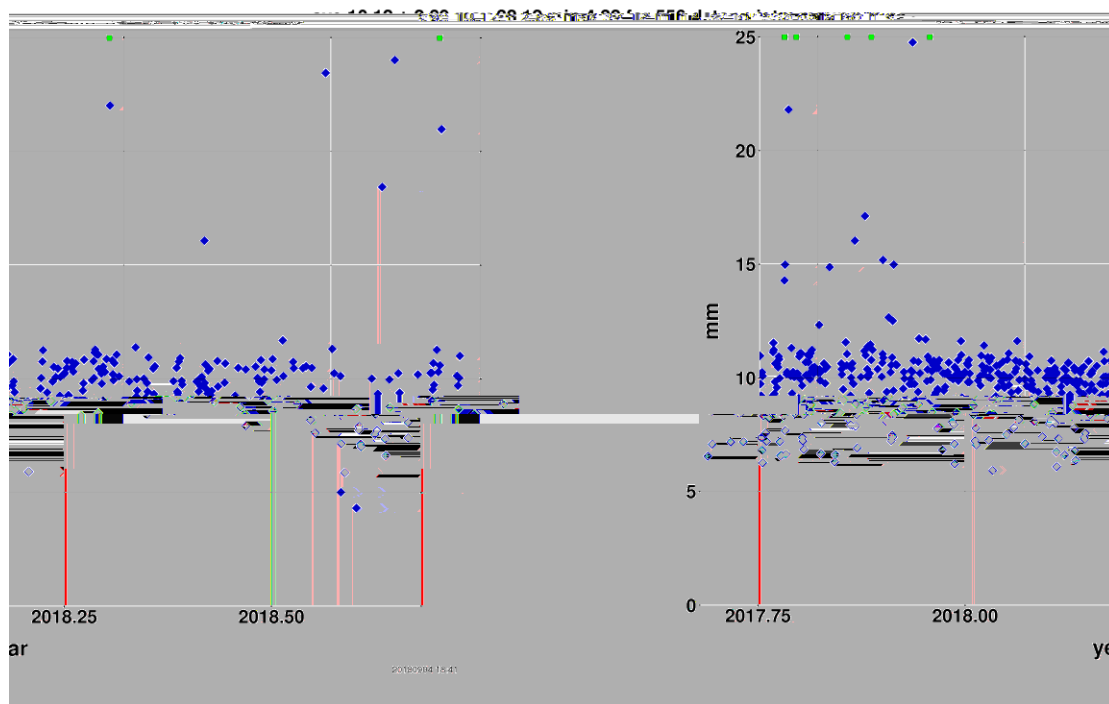
2018

LAGEOS

1.6.1

1.6.2

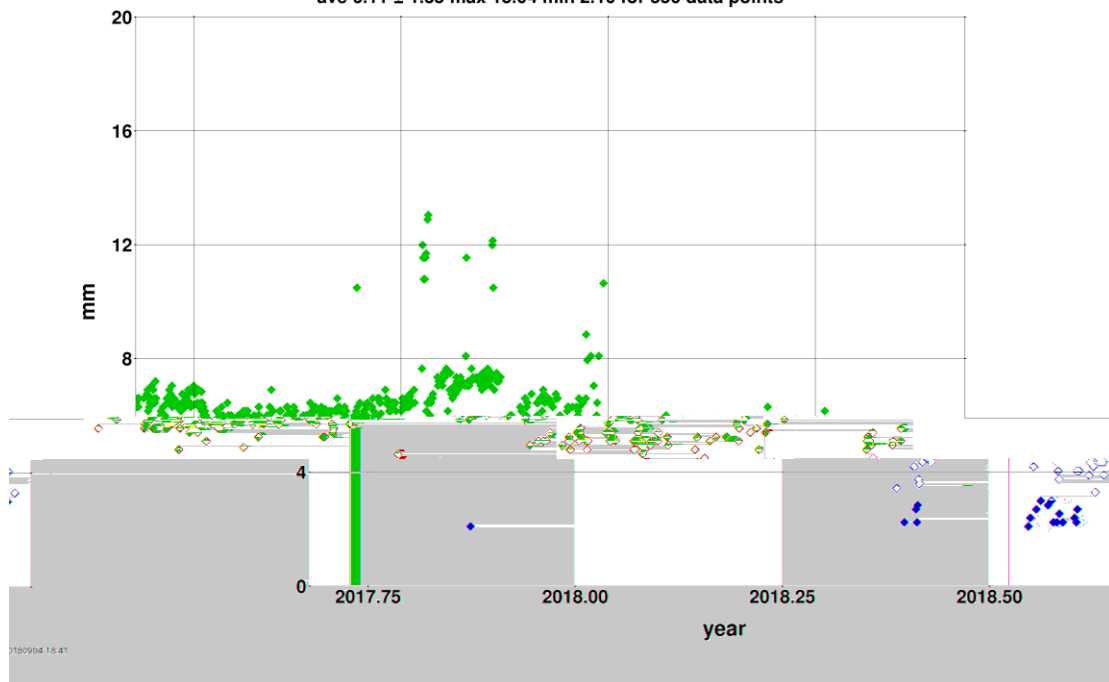
Changchun, China 7237
pass average LAGEOS normal point rms



1.6.1 2018 LAGEOS

Changchun, China 7237
pass LAGEOS calibration rms

ave 6.11 ± 1.35 max 13.04 min 2.10 for 556 data points



1.6.2 2018 LAGEOS

1



2.1.1

2	GT668		
		RGG	GT668
SLR		RGG	
3	pco.1600		
	pco.1600		pco.1600

2018 SLR
16465 3894
2018
GT668 SLR RGG
RGG